

This announcement is based on product catalogue information previously shown before its discontinuation
Product information of the existing product may be different from the previous version

G3VM-41LR5

MOS FET Relays

World's Smallest* SSOP Package MOS FET Relays with Low Output Capacitance and ON Resistance ($C \times R = 10 \text{ pF} \cdot \Omega$) in a 40-V Load Voltage Model.

• ON resistance of 1Ω (typical) suppresses output signal attenuation.

* As of March 2011 Survey by OMRON

RoHS compliant

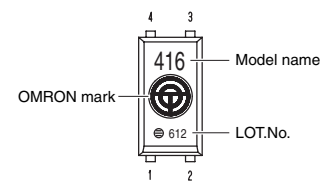
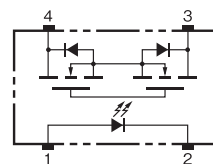


Note: The actual product is marked differently from the image shown here.

Application Examples

- Semiconductor test equipment
- Test & Measurement equipment
- Communication equipment
- Data loggers

Terminal Arrangement/Internal Connections



Note: The actual product is marked differently from the image shown here.

List of Models

Package type	Contact form	Terminals	Load voltage (peak value) *	Model	Minimum package quantity
					Number per tape and reel
SSOP4	1a (SPST-NO)	Surface-mounting Terminals	40 V	G3VM-41LR5	-
				G3VM-41LR5 (TR05)	500
				G3VM-41LR5 (TR10)	1,000
				G3VM-41LR5 (TR)	1,500

Note: Ask your OMRON representative for orders under 1,500 pcs, 1,000 pcs, or 500 pcs. We can supply products with the tape already cut. Tape-cut SSOPs are packaged without humidity resistance. Use manual soldering to mount them. Refer to common precautions.

* The AC peak and DC value are given for the load voltage.

Absolute Maximum Ratings ($T_a = 25 \text{ }^\circ\text{C}$)

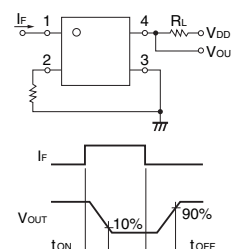
Item	Symbol	Rating	Unit	Measurement conditions	
Input	LED forward current	I_F	50	mA	
	LED forward current reduction rate	$\Delta I_F / ^\circ\text{C}$	-0.5	mA/ $^\circ\text{C}$	$T_a \geq 25 \text{ }^\circ\text{C}$
	LED reverse voltage	V_R	5	V	
	Connection temperature	T_J	125	$^\circ\text{C}$	
Output	Load voltage (AC peak/DC)	V_{OFF}	40	V	
	Continuous load current (AC peak/DC)	I_o	300	mA	
	ON current reduction rate	$\Delta I_o / ^\circ\text{C}$	-3.0	mA/ $^\circ\text{C}$	$T_a \geq 25 \text{ }^\circ\text{C}$
	Connection temperature	T_J	125	$^\circ\text{C}$	
Dielectric strength between I/O (See note 1.)	V_{I-O}	1500	V_{rms}	AC for 1 min	
Ambient operating temperature	T_a	-20 to +85	$^\circ\text{C}$	With no icing or condensation	
Ambient storage temperature	T_{stg}	-40 to +125	$^\circ\text{C}$	With no icing or condensation	
Soldering temperature	-	260	$^\circ\text{C}$	10 s	

Note: 1. The dielectric strength between the input and output was checked by applying voltage between all pins as a group on the LED side and all pins as a group on the light-receiving side.

Electrical Characteristics ($T_a = 25 \text{ }^\circ\text{C}$)

Item	Symbol	Minimum	Typical	Maximum	Unit	Measurement conditions	
Input	LED forward voltage	V_F	1.0	1.15	1.3	V	$I_F = 10 \text{ mA}$
	Reverse current	I_R	-	-	10	μA	$V_R = 5 \text{ V}$
	Capacity between terminals	C_T	-	15	-	pF	$V = 0, f = 1 \text{ MHz}$
	Trigger LED forward current	I_{FT}	-	-	4	mA	$I_o = 100 \text{ mA}$
Output	Maximum resistance with output ON	R_{ON}	-	1.0	1.5	Ω	$I_F = 5 \text{ mA}, I_o = 300 \text{ mA}, t = 10 \text{ ms}$
	Current leakage when the relay is open	I_{LEAK}	-	-	1.0	nA	$V_{OFF} = 30 \text{ V}, T_a = 50 \text{ }^\circ\text{C}$
	Capacity between terminals	C_{OFF}	-	10	14	pF	$V = 0, f = 100 \text{ MHz}, t < 1 \text{ s}$
	Capacity between I/O terminals	C_{I-O}	-	0.8	-	pF	$f = 1 \text{ MHz}, V_s = 0 \text{ V}$
	Insulation resistance between I/O terminals	R_{I-O}	1000	-	-	M Ω	$V_{I-O} = 500 \text{ VDC}, \text{RoH} \leq 60 \%$
Turn-ON time	t_{ON}	-	0.2	0.5	ms	$I_F = 5 \text{ mA}, R_L = 200 \Omega,$ $V_{DD} = 10 \text{ V}$ (See note 2.)	
Turn-OFF time	t_{OFF}	-	0.2	0.5	ms		

Note: 2. Turn-ON and Turn-OFF Times



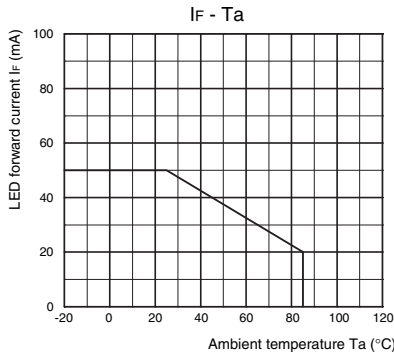
Recommended Operating Conditions

Use the G3VM under the following conditions so that the Relay will operate properly.

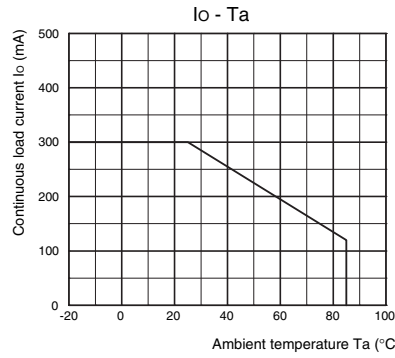
Item	Symbol	Minimum	Typical	Maximum	Unit
Load voltage (AC peak/DC)	V _{DD}	-	-	32	V
Operating LED forward current	I _F	10	-	30	mA
Continuous load current (AC peak/DC)	I _O	-	-	300	mA
Ambient operating temperature	T _a	25	-	60	°C

Engineering Data

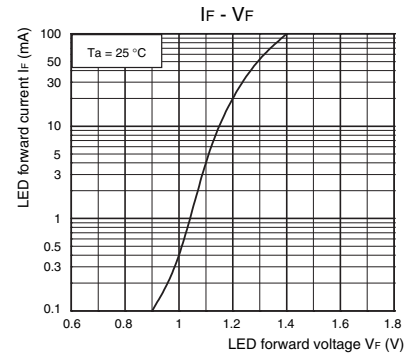
LED forward current vs. Ambient temperature



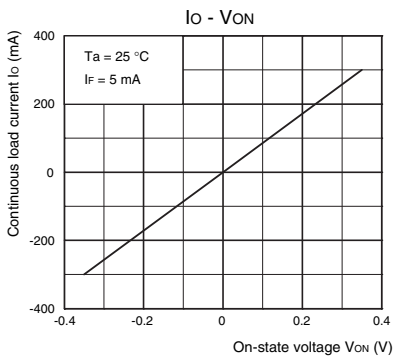
Continuous load current vs. Ambient temperature



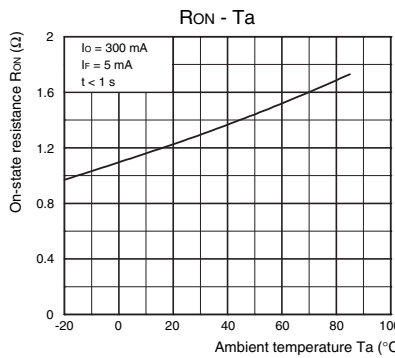
LED forward current vs. LED forward voltage



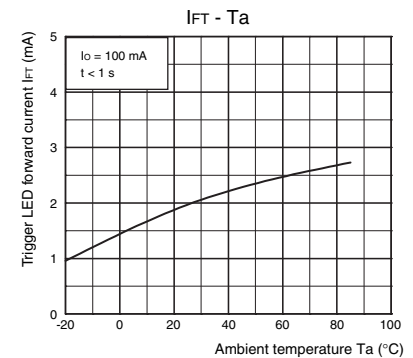
Continuous load current vs. On-state voltage



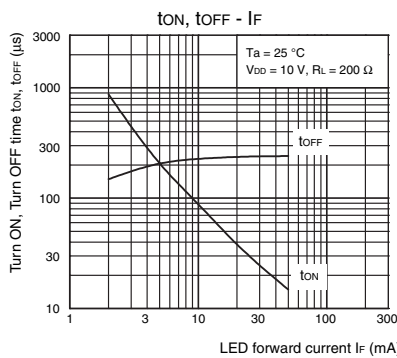
On-state resistance vs. Ambient temperature



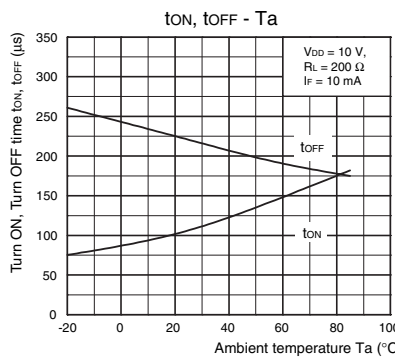
Trigger LED forward current vs. Ambient temperature



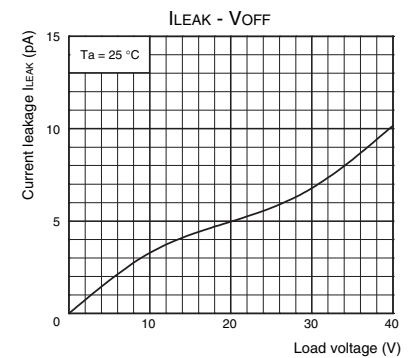
Turn ON, Turn OFF time vs. LED forward current



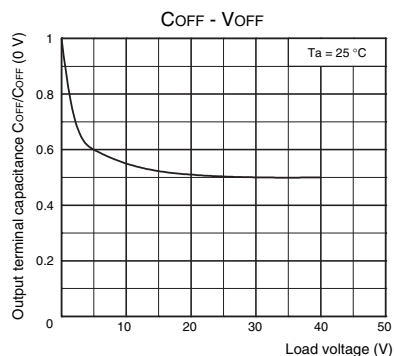
Turn ON, Turn OFF time vs. Ambient temperature



Current leakage vs. Load voltage



Output terminal capacitance vs. Load voltage



Safety Precautions

- Refer to "Common Precautions" for all G3VM models.

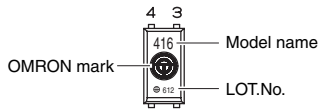
Appearance/Dimensions

This announcement is based on product catalogue information previously shown before its discontinuation
Product information of the existing product may be different from the previous version

■ Appearance

SSOP (Shrink Small Outline Package)

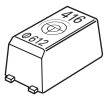
SSOP4



Note: The actual product is marked differently from the image shown here.

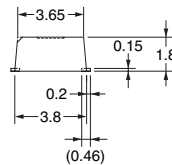
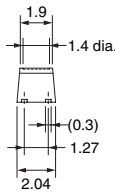
■ Dimensions

(Unit: mm)



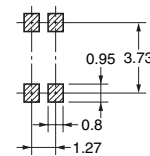
Surface-mounting Terminals

Weight: 0.03 g



Actual Mounting Pad Dimensions

(Recommended Value, TOP VIEW)



Unless otherwise specified, the dimensional tolerance is ± 0.1 mm.

Note: The actual product is marked differently from the image shown here.

- Application examples provided in this document are for reference only. In actual applications, confirm equipment functions and safety before using the product.
- Consult your OMRON representative before using the product under conditions which are not described in the manual or applying the product to nuclear control systems, railroad systems, aviation systems, vehicles, combustion systems, medical equipment, amusement machines, safety equipment, and other systems or equipment that may have a serious influence on lives and property if used improperly. Make sure that the ratings and performance characteristics of the product provide a margin of safety for the system or equipment, and be sure to provide the system or equipment with double safety mechanisms.

Note: Do not use this document to operate the Unit.

OMRON Corporation

ELECTRONIC AND MECHANICAL COMPONENTS COMPANY

Contact: www.omron.com/ecb

Cat. No. K200-E1-01

0412(0412)(O)