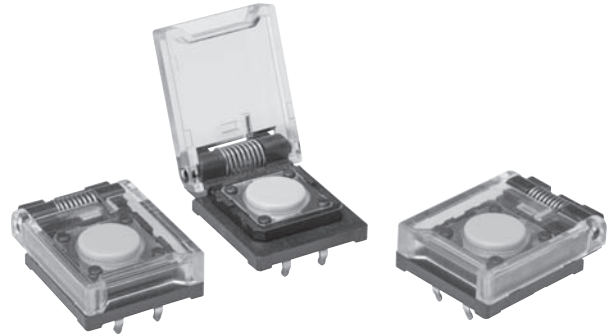


### Through-hole Mounting: the Ideal Tactile Switches to Prevent Malfunctions

- Covers prevent the Switches from being unintentionally pressed.
- Return springs ensure that the covers are closed.

RoHS Compliant



### ■ List of Model

Type	Model
Tactile Switch with protective cover	B3F-8000 (N)

**Note:** The Switches are packed in boxes. The minimum order unit is 200 Switches per box. Order in multiples of the packing quantity.

### ■ Operating Characteristics

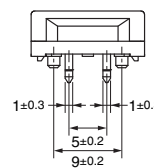
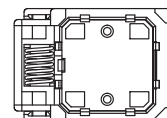
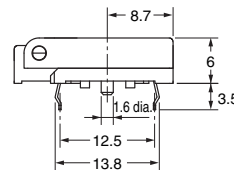
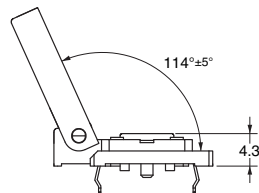
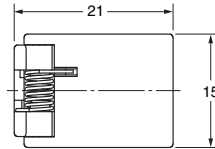
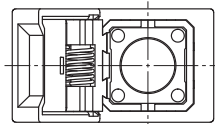
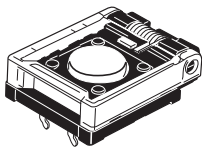
Item	B3F-8000 (N)
Operating force (OF)	1.27±0.49 N {130±50 gf}
Releasing force (RF)	0.29 N {30 gf} min.
Pretravel (PT)	0.3 <sup>+0.2</sup> / <sub>-0.1</sub> mm

### ■ Ratings/Characteristics

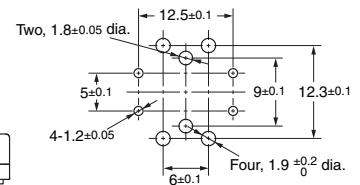
Rating (resistive load)	1 to 50 mA, 3 to 24 VDC
Minimum applicable load (reference value)	10 µA at 1 VDC (resistive load)
Ambient operating temperature	-25°C to +70°C at 60%RH max. (with no icing or condensation)
Ambient operating humidity	35% to 85% RH (at +5 to +35 °C)
Contact form	SPST-NO
Contact resistance (initial value)	100 mΩ max.
Insulation resistance	100 MΩ max. (at 250 VDC with insulation tester)
Dielectric strength	500 VAC, 50/60Hz for 1 min
Bounce time	5 ms max.
Vibration resistance	10 to 55 Hz, 1.5 mm double amplitude
Shock resistance	Destruction: 1,000 m/s <sup>2</sup> max. Malfunction: 100 m/s <sup>2</sup> max.
Durability	Switch; 3,000,000 operations Min., Cover; 5,000 operations Min.
Degree of protection	IEC IP00
Washing	Not possible

### ■ Dimensions

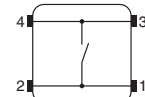
#### B3F-8



#### PCB Processing Dimensions (Reference Only) (Top View) (PCB thickness t=1.6)



#### Terminal Arrangement/ Internal Connections (Top View)



**Note:** Unless otherwise specified, a tolerance of ± 0.5 mm applies to all dimensions.

## ■ Precautions

Be sure to read the safety precautions common to all Tactile Switches for correct use.

- Application examples provided in this document are for reference only. In actual applications, confirm equipment functions and safety before using the product.
- Consult your OMRON representative before using the product under conditions which are not described in the manual or applying the product to nuclear control systems, railroad systems, aviation systems, vehicles, combustion systems, medical equipment, amusement machines, safety equipment, and other systems or equipment that may have a serious influence on lives and property if used improperly. Make sure that the ratings and performance characteristics of the product provide a margin of safety for the system or equipment, and be sure to provide the system or equipment with double safety mechanisms.

**Note: Do not use this document to operate the Unit.**